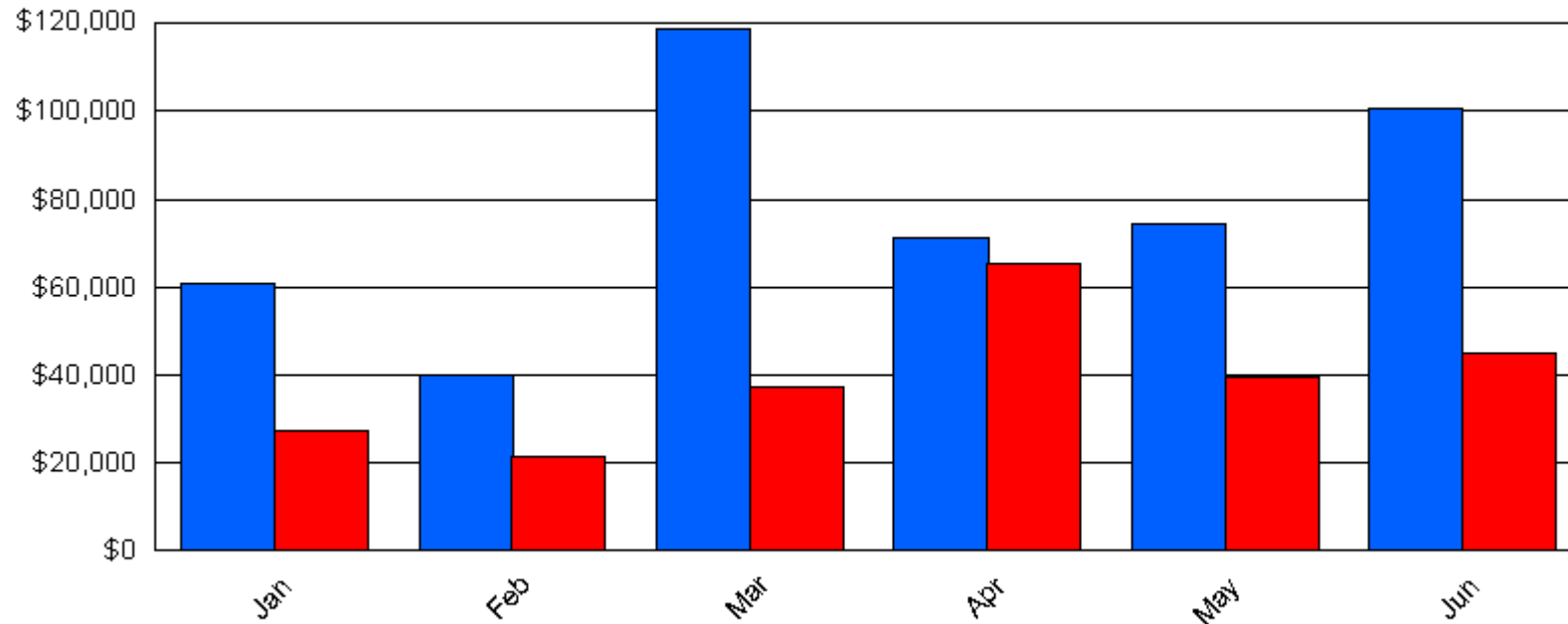


Current Period: 01/01/06 through 06/30/06

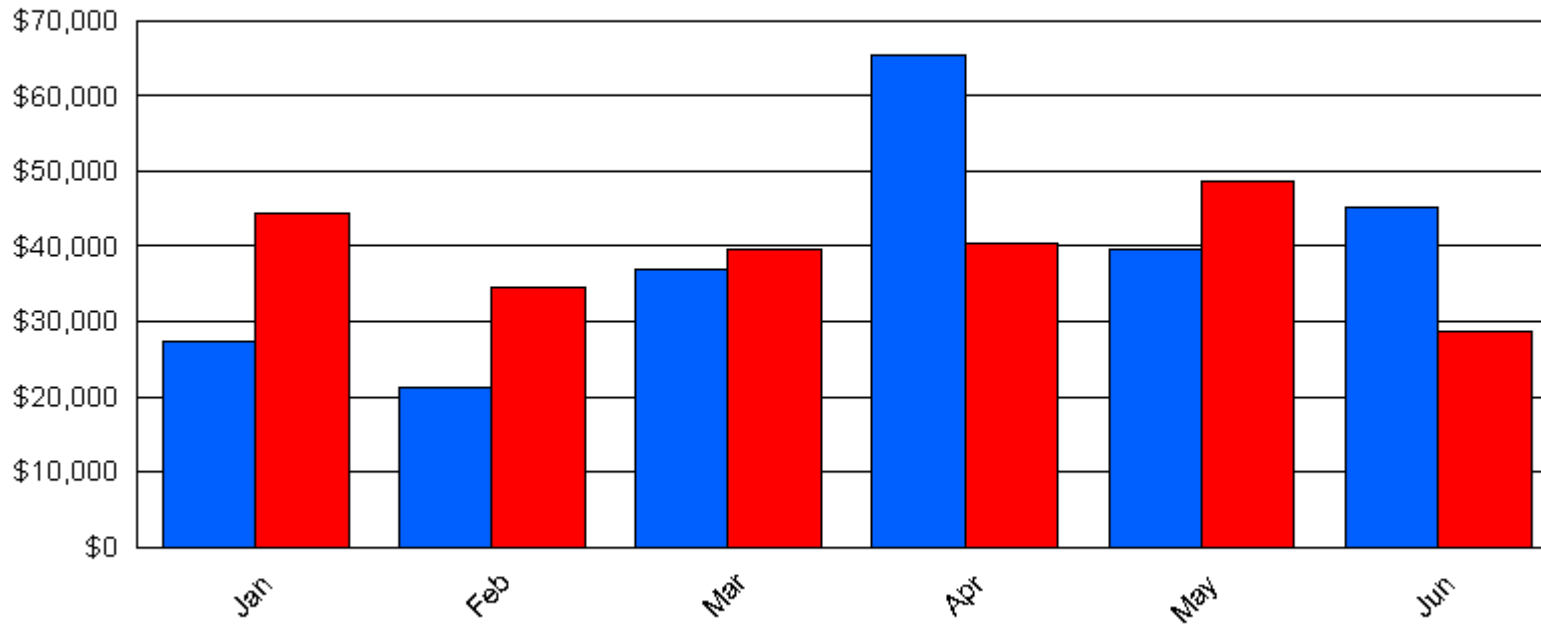


Charges and Payments For Current Year

| | |
|-----------------|---------------------|
| Charges | \$464,965.46 |
| Payments | \$235,558.83 |

Current Period: 01/01/06 through 06/30/06

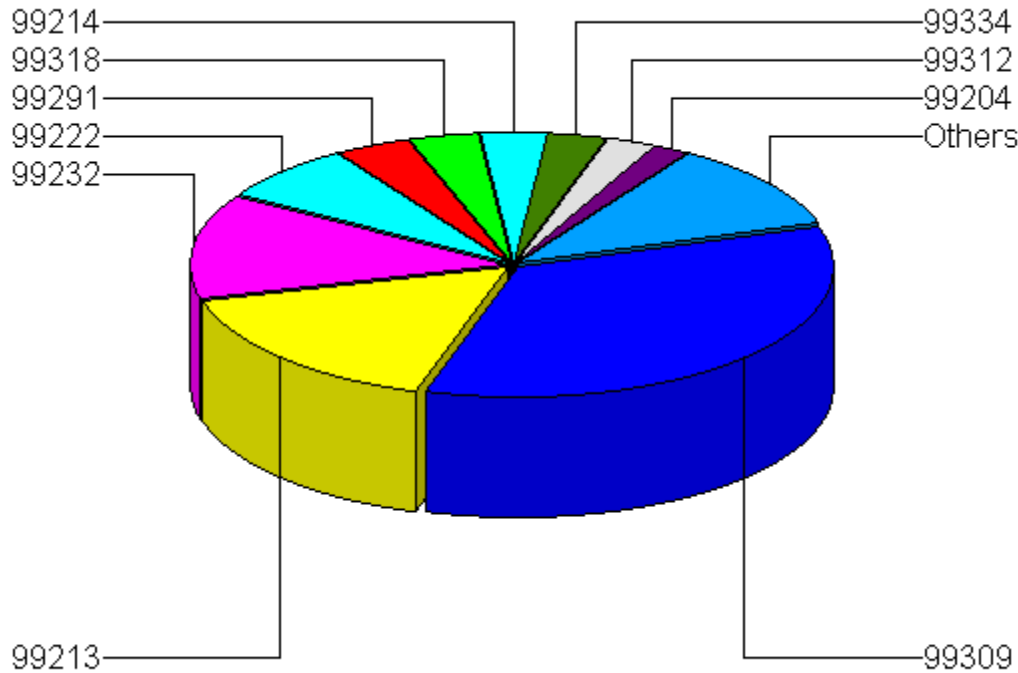
Current Period Payment **Previous Period Payment**



Payments (Comparing This Year vs Last Year)

| | | |
|-------------------------------|---------------------|----------------|
| Current Year Payments | \$235,558.83 | 0% Less |
| Previous Year Payments | \$236,319.60 | |

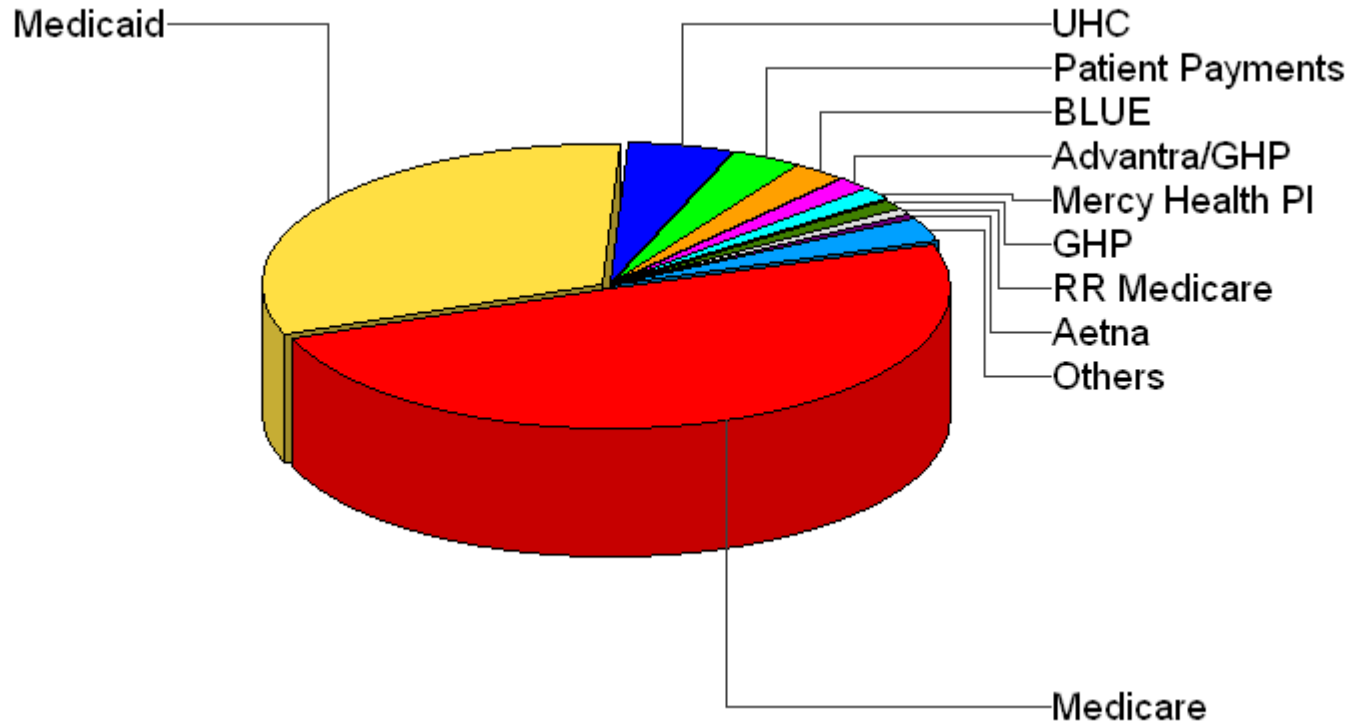
Current Period: 01/01/06 through 06/30/06



Top 10 Services For Category: ALL

| | | | |
|----------------------|--------------------------------|---------------------|-------------|
| 99309 | F/U NH-moderate 2006 | \$161,598.21 | 35% |
| 99213 | Office Visit Est Level 4 Compr | \$75,084.29 | 16% |
| 99232 | Follow Up Hospital Lev 2 | \$59,934.35 | 13% |
| 99222 | Initial H P | \$32,228.23 | 7% |
| 99291 | Initial Icu Hosp Visit | \$18,667.19 | 4% |
| 99318 | NH Yearly Assessment | \$16,720.90 | 4% |
| 99214 | Office Visit Est Comp | \$15,280.66 | 3% |
| 99334 | RESIDENTIAL EST 15 MIN | \$14,198.75 | 3% |
| 99312 | Nursing Home Level 2 F/U | \$11,940.72 | 3% |
| 99204 | Office New Level 4 Comp | \$8,800.48 | 2% |
| Others | | \$50,511.68 | 11% |
| Total Charged | | \$464,965.46 | 100% |

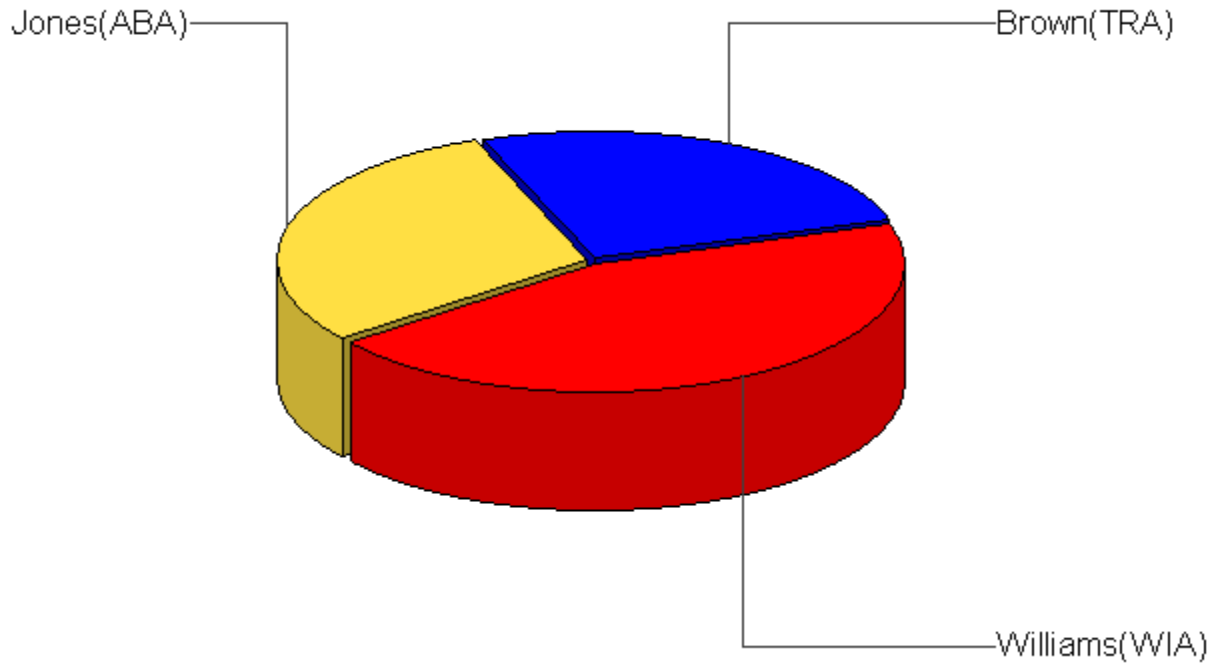
Current Period: 01/01/06 through 06/30/06



Top 10 Payers

| | | |
|-----------------------|---------------------|-------------|
| Medicare | \$115,871.97 | 49% |
| Medicaid | \$74,822.89 | 32% |
| UHC | \$11,197.85 | 5% |
| Patient Payments | \$8,218.48 | 3% |
| BLUE | \$5,586.91 | 2% |
| Advantra/GHP | \$4,253.97 | 2% |
| Mercy Health Plan | \$3,020.51 | 1% |
| GHP | \$2,775.27 | 1% |
| RR Medicare | \$1,835.24 | 1% |
| Aetna | \$1,567.80 | 1% |
| Others | \$6,407.94 | 3% |
| Total Payments | \$235,558.83 | 100% |

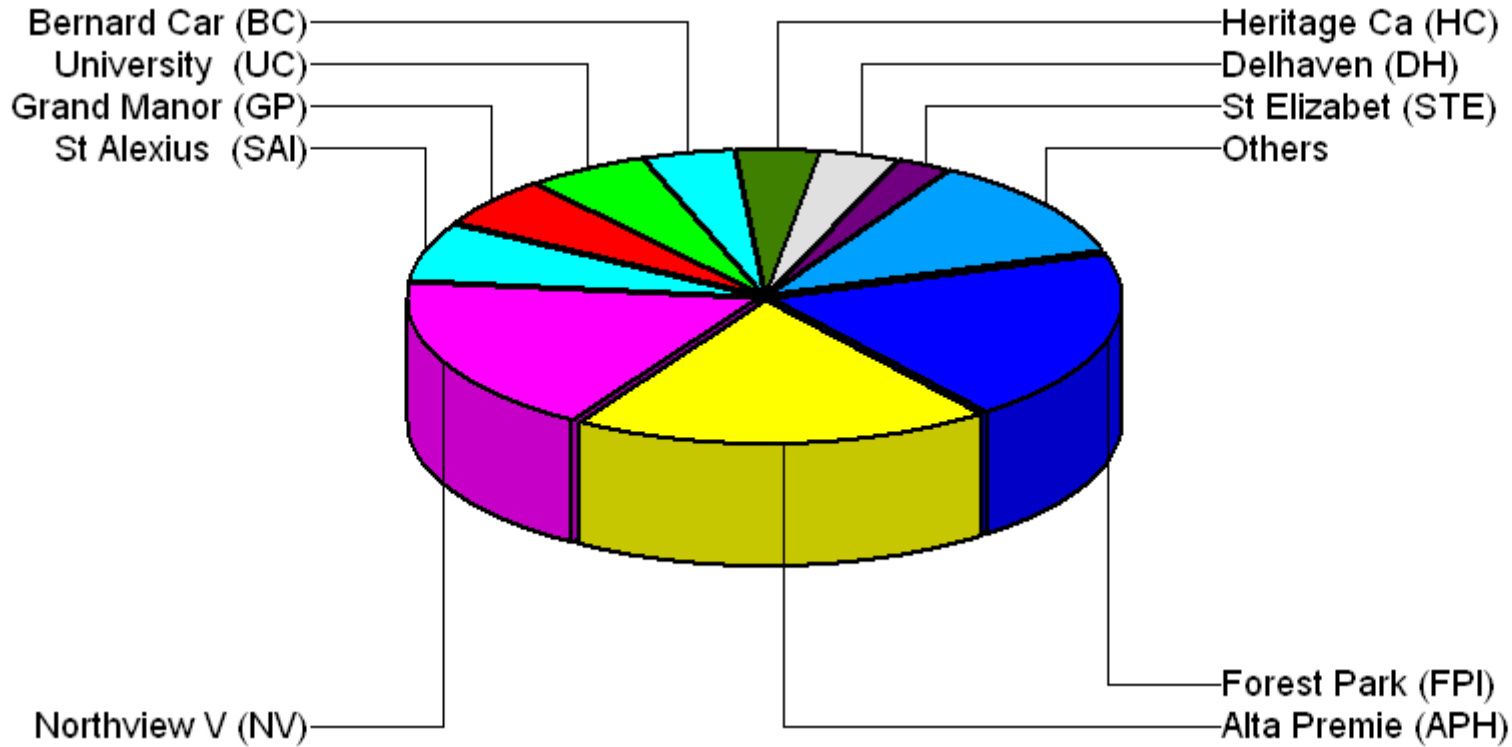
Current Period: 01/01/06 through 06/30/06



Revenue by Physician

| | | |
|--------------------------|---------------------|-------------|
| Tim Williams, MD (WIA) | \$104,660.96 | 44% |
| Alphonse Jones, MD (ABA) | \$69,715.29 | 30% |
| David Brown, MD (TRA) | \$61,182.58 | 26% |
| Total Payments | \$235,558.83 | 100% |

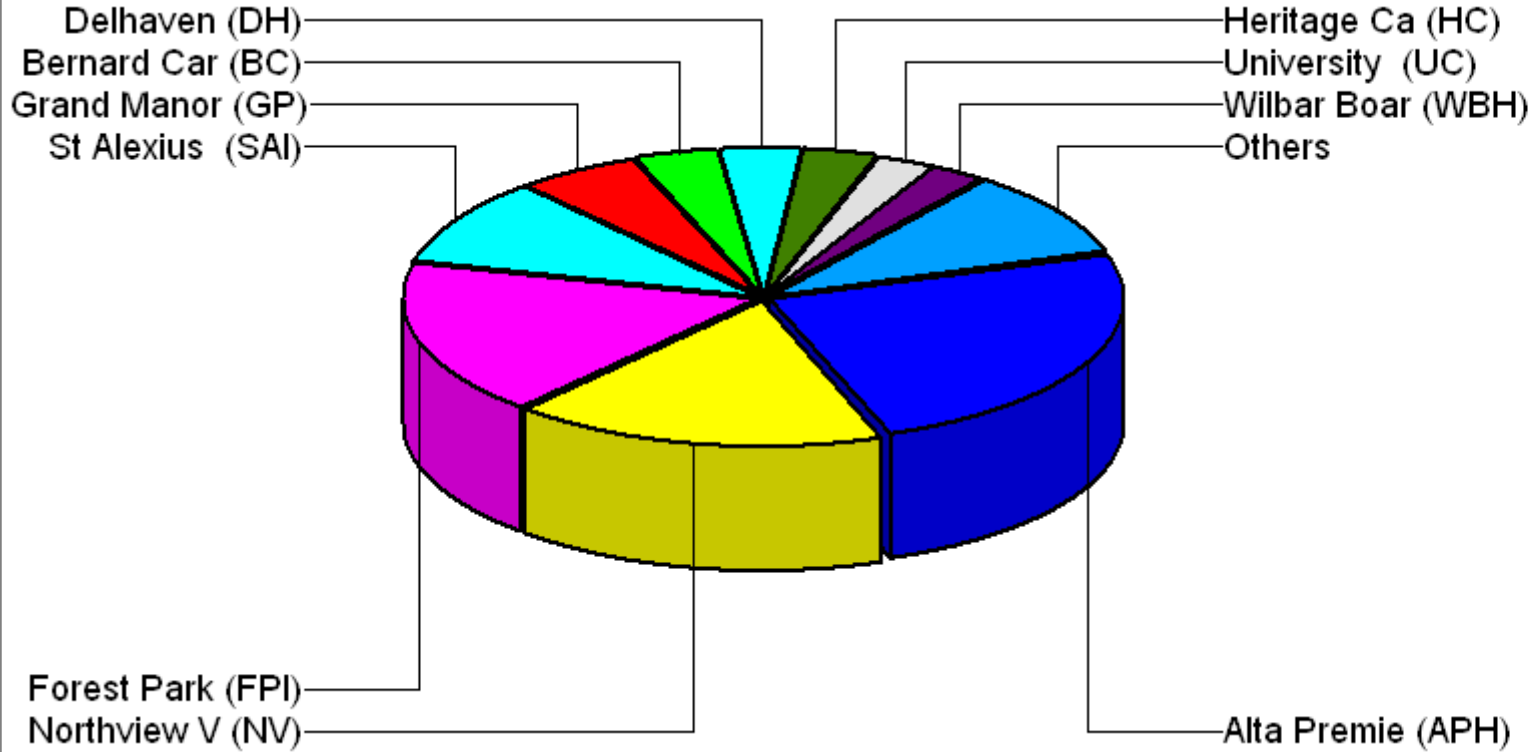
Current Period: 01/01/06 through 06/30/06



Revenue by Place Of Service

| | | |
|---------------------------|---------------------|-------------|
| Forest Park Hosp Ip (FPI) | \$45,891.43 | 19% |
| Alta Premier Health (APH) | \$45,700.65 | 19% |
| Northview Village (NV) | \$42,008.90 | 18% |
| St Alexius Hosp Ip (SAI) | \$15,612.60 | 7% |
| Grand Manor (GP) | \$13,163.88 | 6% |
| University Forest (UC) | \$13,032.55 | 6% |
| Bernard Care (BC) | \$9,521.31 | 4% |
| Heritage Care (HC) | \$9,377.23 | 4% |
| Delhaven (DH) | \$8,554.78 | 4% |
| St Elizabeths (STE) | \$6,022.06 | 3% |
| Others | \$26,673.44 | 11% |
| Total Payments | \$235,558.83 | 100% |

Current Period: 01/01/06 through 06/30/06



Charges by Place of Service

| | | |
|----------------------------------|---------------------|-------------|
| Alta Premier Health (APH) | \$113,930.89 | 25% |
| Northview Village (NV) | \$80,257.72 | 17% |
| Forest Park Hosp Ip (FPI) | \$79,358.02 | 17% |
| St Alexius Hosp Ip (SAI) | \$45,058.01 | 10% |
| Grand Manor (GP) | \$26,449.38 | 6% |
| Bernard Care (BC) | \$18,493.00 | 4% |
| Delhaven (DH) | \$15,689.19 | 3% |
| Heritage Care (HC) | \$15,410.26 | 3% |
| University Forest (UC) | \$13,964.09 | 3% |
| Wilbar Boarding (WBH) | \$11,136.87 | 2% |
| Others | \$45,218.03 | 10% |
| Total Charges | \$464,965.46 | 100% |